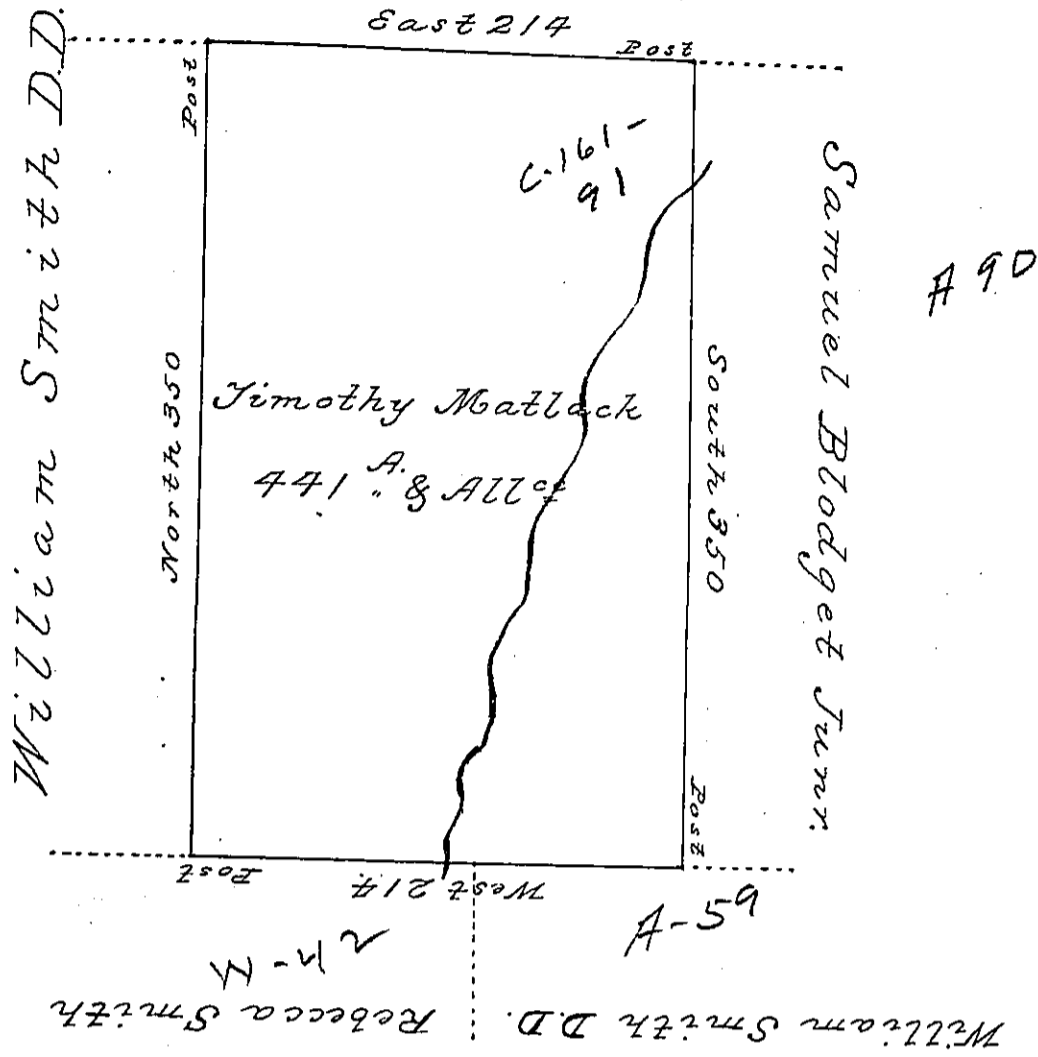


Arent Sonman



Situated on the waters of the North fork of Little
 Conemaugh in the Township and County of Cam-
 bria. and Surveyed the day of June 1794 by George
 Woods junr. Deputy Surveyor in pursuance of a
 Warrant dated the 25th day of March 1794.
 Examined the 6th day of July 1808.

Samuel Cochran Esqr. }
 Surveyor General } William O'Keeffe D.D.

IN TESTIMONY that the above is a copy of the original remaining on file in the
 Department of Internal Affairs of Pennsylvania, made con-
 formably to an Act of Assembly approved the 16th day of
 February, 1833, I have hereunto set my Hand and caused
 the Seal of said Department to be affixed at Harrisburg, this

Twish day of October 1896

James W. Patton
 Secretary of Internal Affairs.